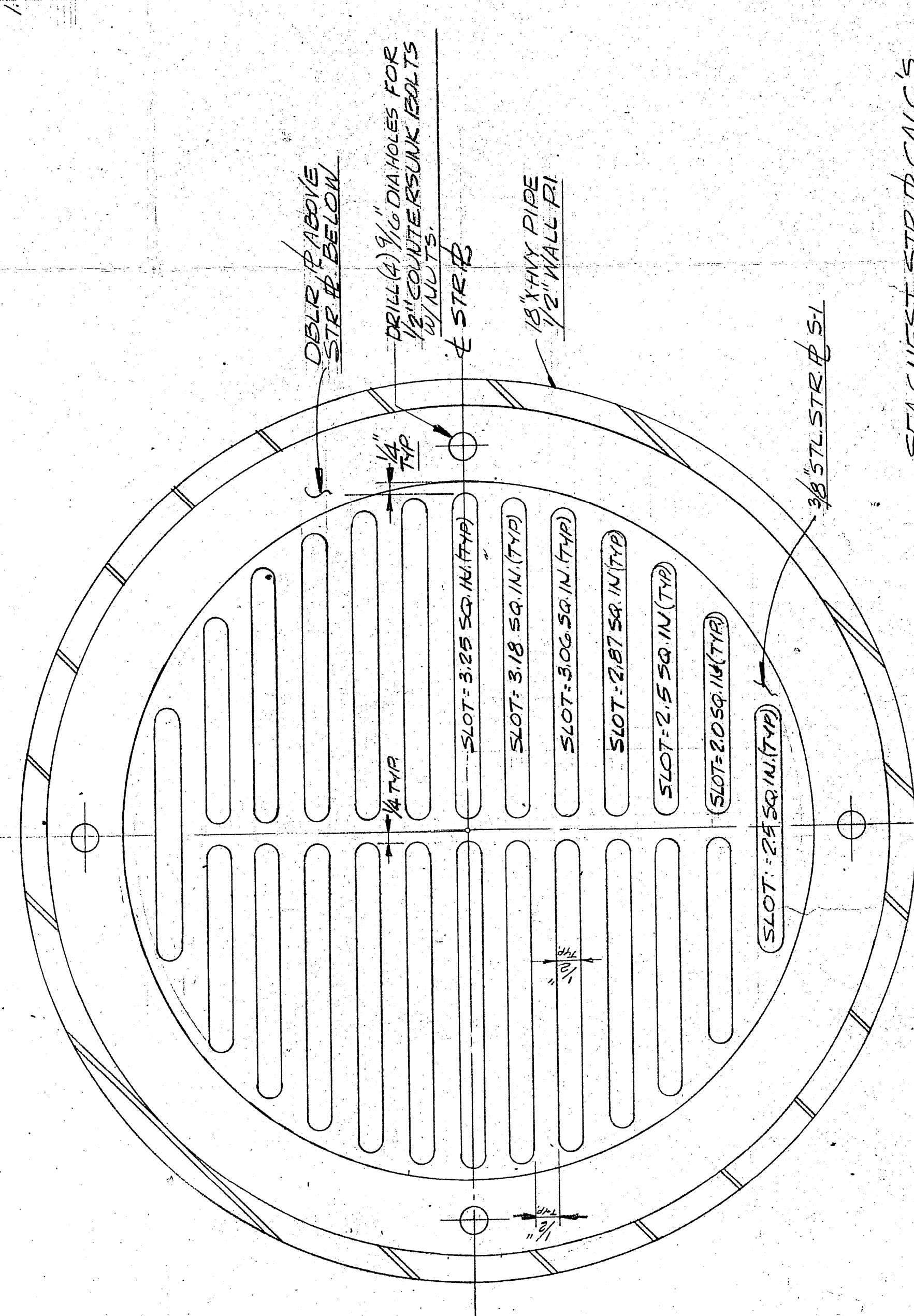
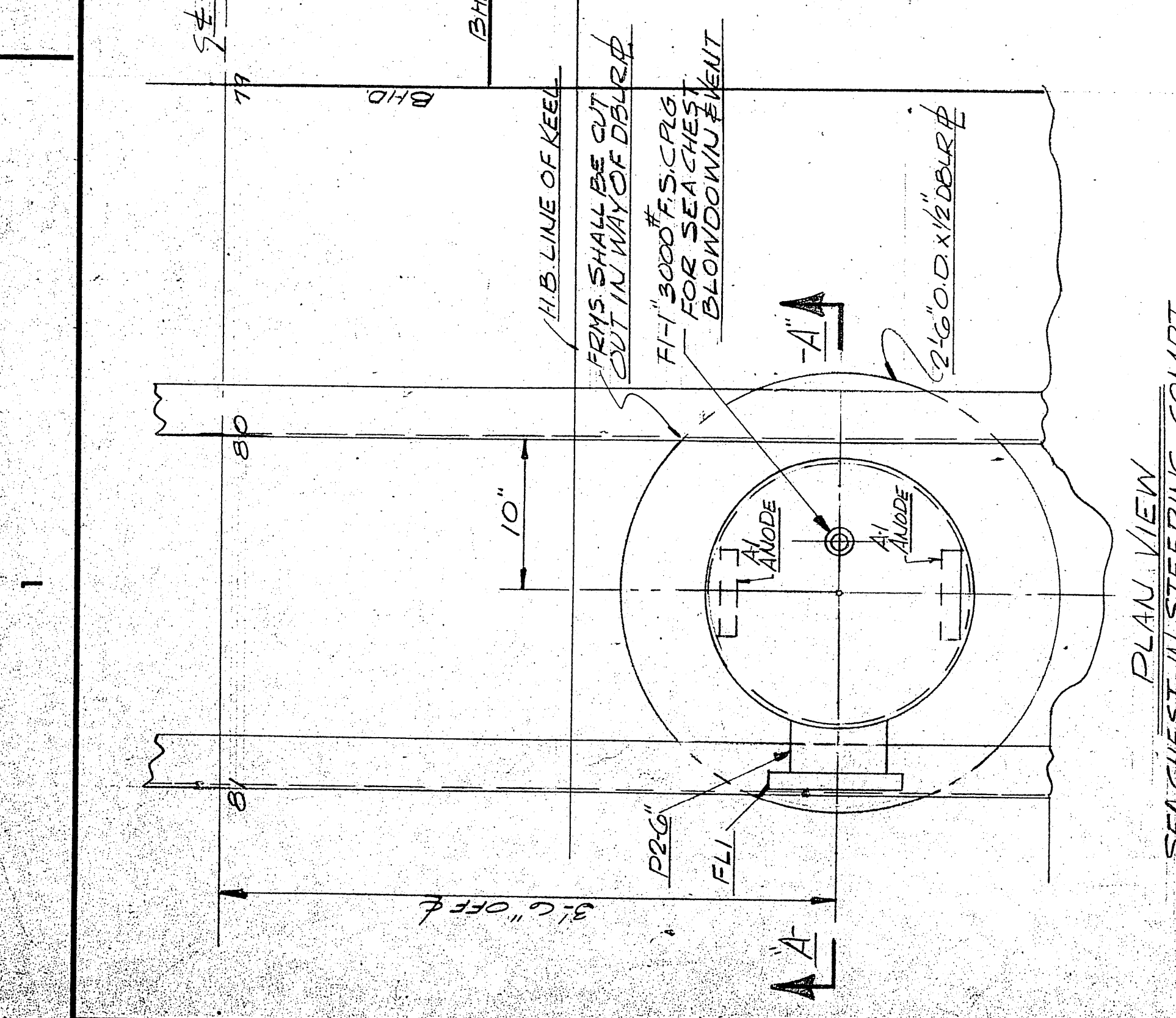
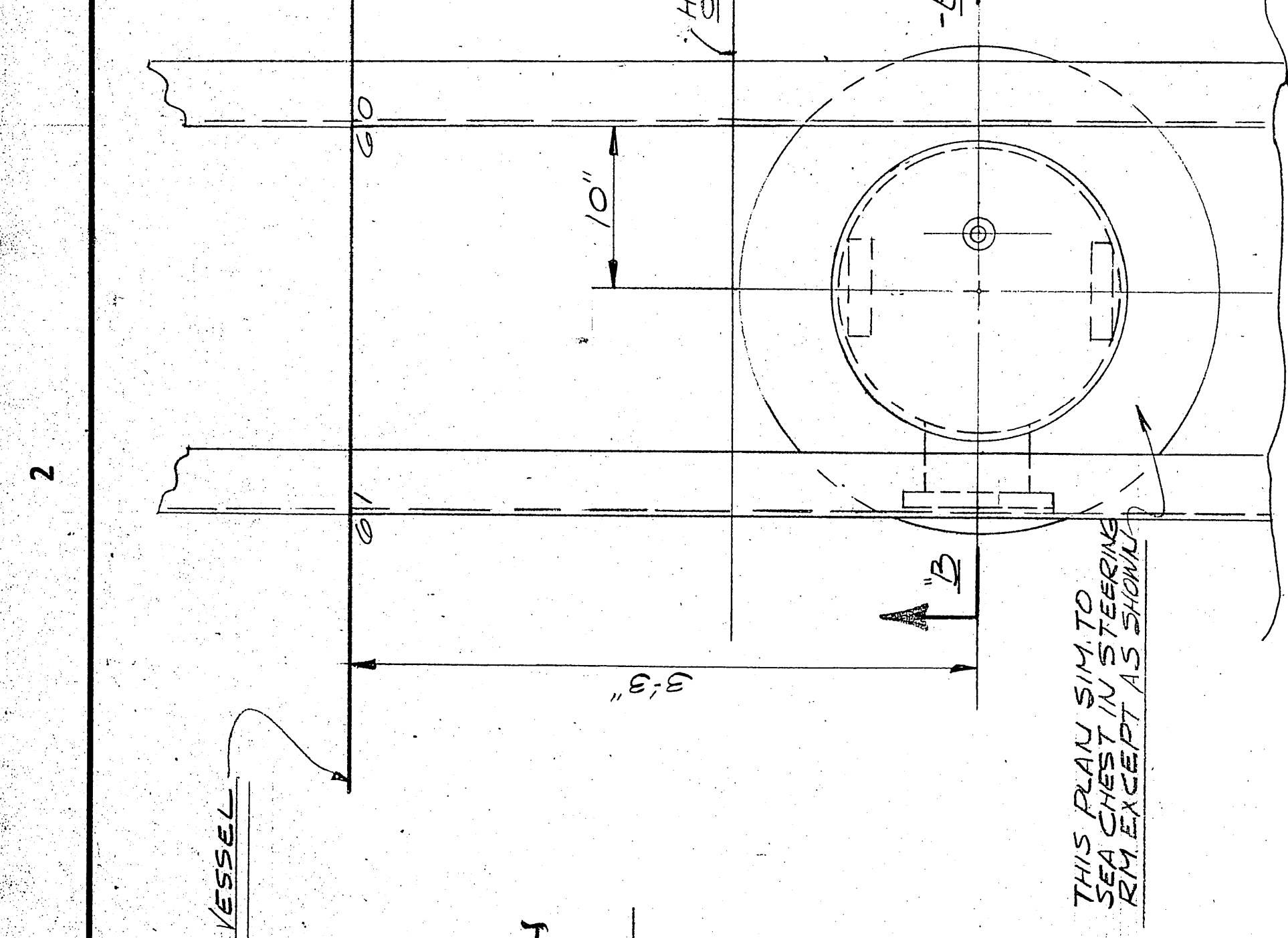
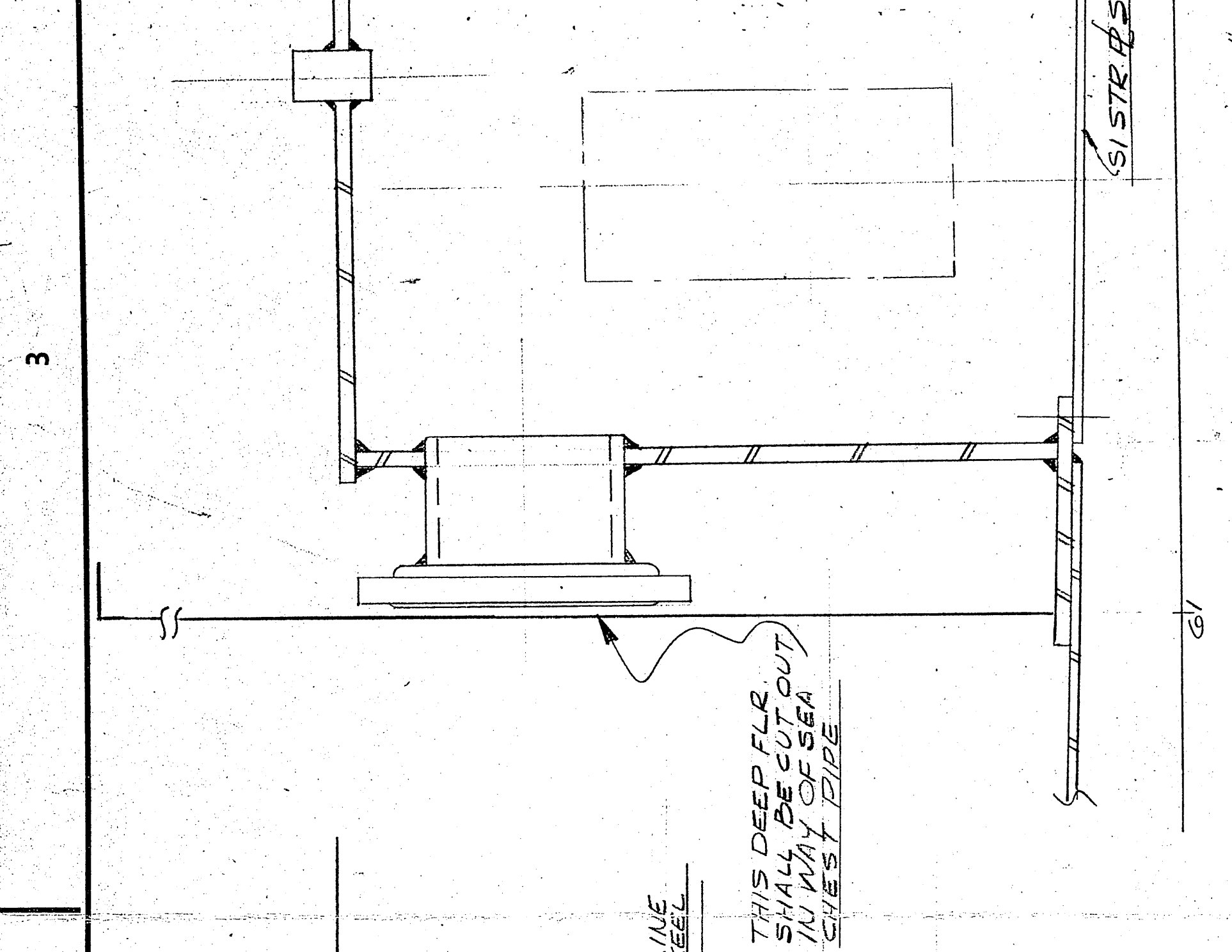
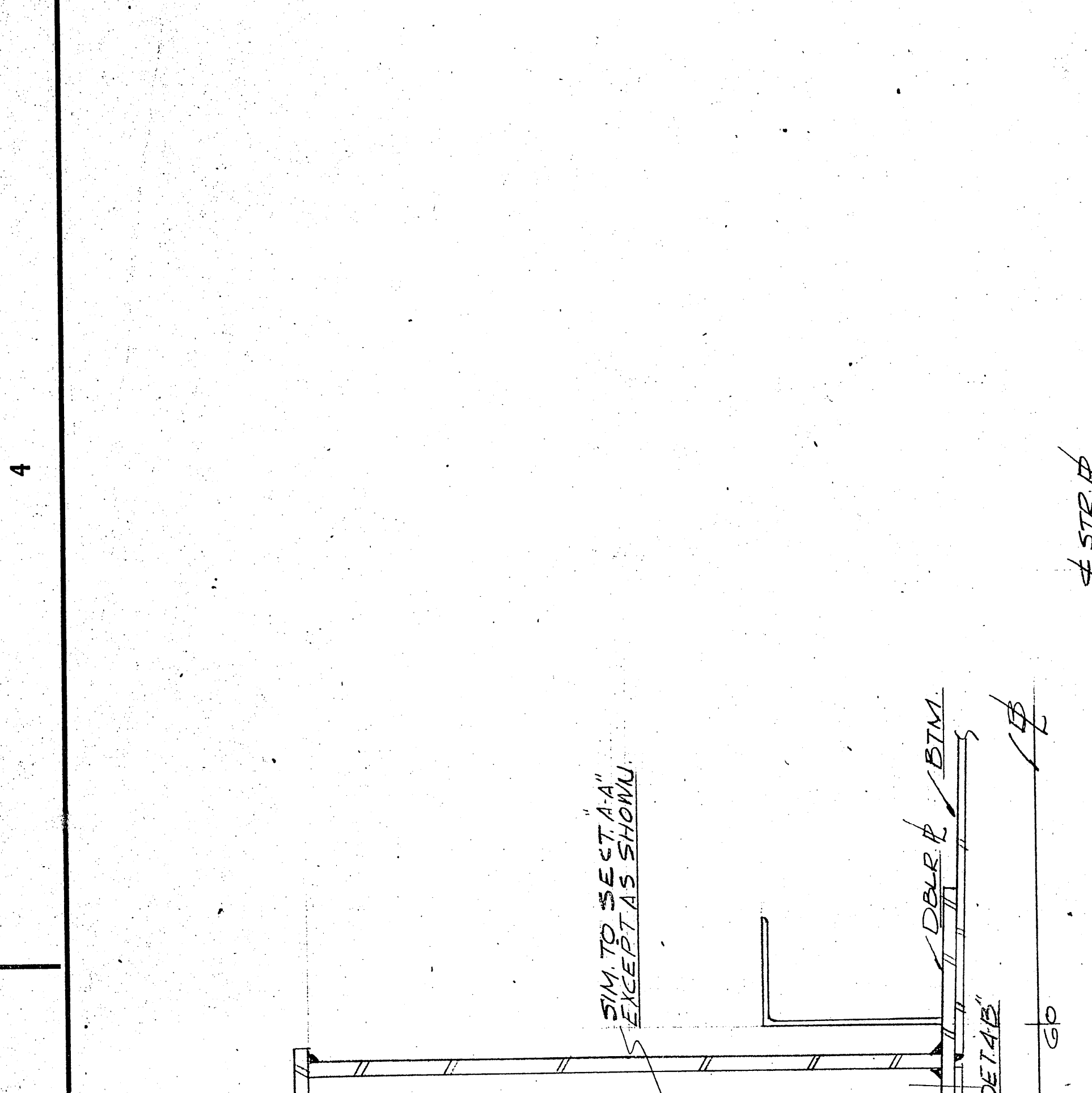


BILL OF MATERIAL			
PG. NO.	QTY.	SIZE	DESCRIPTION
P1	50	1/2" WALL	PIPE X-HVY SMLS STL
P2	10	6"	SEMISO
FL1	2	6"	FLG. SO. R.F. STL. A374
S1	50	3/8"	STRIP STL. (FOR STRS)
F1	2	1"	SEALG. F STL. SCR. 3000#
A1	4	1/2" DIA	STL. TO BE BORED TO SEA
B	100	1/2" DIA	ALUM ANODES
	8	1/2" DIA	CTSK BOLTS W/ NUTS

GENERAL NOTES:
 THESE SEA CHEST ARE SIZED TO SERVE BILGE & BALL SYS. G" PIPE SANIT SYS. 2" PIPE FIRE SYS. 4" PIPE & SIMPLIC. SYS. 1/2" PIPE. SEE STRIP CALCS. BELOW.

DATE	BY
DESCRIPTION	REVISIONS
APPROVALS	
OFFICE COPY	
U.S. NAVAL SHIP SYSTEMS COMMAND	
WASHINGTON D.C. 20380	
OCEANOGRAPHIC RESEARCH SHIP	
AGOR (UTILITY CLASS)	
HAUER MARINE SERVICES, INC.	
P.O. BOX 28866 NEW ORLEANS, LA. 70189	
SEA CHESTS	
SCALE	DATE
DRAWN BY	CHKD BY
HALTER	HALTER
JOB NO.	JOB NO.
NAVSHIPS NO.	NAVSHIPS NO.



SEA CHEST STRIP CALCS
 AREA OF 6" SCH 80 PIPE = 29.07 SQ. IN.
 AREA OF 4" SCH 80 PIPE = 21.50 SQ. IN.
 AREA OF 1/2" SCH 80 PIPE = 1.76 SQ. IN.
 TOTAL AREA OF STRIP = 52.33 SQ. IN.
 TOTAL OPENING AREA OF STRIP = 50.94 SQ. IN.

00066